

DRAFT
Annual **2023**
Business Plan **2024**
& Budget



Public Consultation

Community members are invited to have their say on Council's proposed Annual Business Plan and Budget for 2023/24. The public consultation period will commence on 18 May 2023 and conclude on 9 June 2023.

Community members are invited to attend an information session to ask questions of Council Members and senior staff:

Meningie

(information session)

29 May 2023, 6:30pm
Meningie Bowling Club

Coonalpyn

(information session)

31 May 2023, 5:30pm
Coonalpyn Community Hall

Tintinara

(information session)

31 May 2023, 7:30pm
Tintinara War Memorial Hall

Peake

(information session)

5 June 2023, 6:30pm
Peake Memorial Hall

Tailem Bend*

(public meeting)

8 June 2023, 6:30pm
Coorong Civic Centre Chambers

*meeting will be live streamed with members of the public required to submit questions in advance

Acknowledgement of Country

We acknowledge and pay respect to the Traditional Custodians of the land and waters, the Ngarrindjeri and Ngarkat People whose ancestral lands are on which we meet.

We acknowledge the deep feelings of attachment and relationship of Aboriginal people to country and pay our respects to Elders past and present.

We also extend that respect to all First Nation People.

The final Annual Business Plan & Budget will be adopted at the Ordinary Council meeting to be held on Tuesday 27 June 2023, 5:00pm.

Version	Status	Release Date
Version 1.0	Draft released for Audit & Risk Committee	5 May 2023
Version 2.0	Draft released for Council (to adopt for public consultation)	12 May 2023
Version 2.1	Amended draft released for Council (to adopt for public consultation)	16 May 2023
Version 2.2	Amended draft released for public consultation	18 May 2023

Contents

Message from the Mayor	4	Community Vision Plan	20
Message from the CEO	6	Outcome 1: Economy	21
Your Council	8	Outcome 2: Infrastructure	22
Council Profile	9	Outcome 3: Community	23
Council Services	11	Outcome 4: Environment	24
Strategic Planning Framework	12	Outcome 5: Leadership	25
Annual Planning Framework	13	Capital Expenditure and Strategic Projects	26
Influencing Factors	14	Operational Expenditure	28
Handy Definitions	16	Service Delivery	30
2023/24 Highlights	17	How your Rates are spent	32
2023/24 Budget at a Glance	18	Rating Methodology	33
2023/24 External Funding	19	Service Charges	34
		Rates Assistance	36
		Rating Strategy	38
		Appendix 1 Financial Statements	42

Message from the Mayor



On behalf of the Council Members I'm pleased to present the draft 2023/24 Annual Business Plan & Budget to the community. This document is one of Council's most vital in terms of detailing how we will fund and resource our service delivery and manage infrastructure across the largest rural council district in the state. In this post-election year, this document has been the collaborative effort of Council Members and Council staff as a result of what you – the community – have told us is important.

While the impact of inflationary pressure has been front and centre in preparation of this document, Council has been intentional about presenting a budget that achieves a balance between Council's long-term financial sustainability and planning for the future. This has led to Council proposing to raise ten per cent more revenue from residents and ratepayers for 2023/24 than last year. The average residential ratepayer will pay \$1,045 in 2023/24, which equates to an overall increase of \$131.

We fully understand that our resident base, community, industry and sporting groups have suffered financial setbacks over the course of the recent pandemic and cost-of-living crisis, and Council has not been immune from these impacts.





I have mentioned previously on many occasions that Council sees our road network as a responsibility – not a burden. With this in mind, our capital budget of \$8.1 million has a significant focus on the renewal of sealed and unsealed roads. Supporting the district’s key economic driver in agriculture will see targeted renewal works on two key routes – Poltalloch and Carcuma roads. These works are made possible by funding under the Special Local Roads Program.

I was also incredibly proud to witness the official opening of the Coorong Community Skate Park in April. The project was partially externally funded through the Local Roads and Community Infrastructure Program, which provides a space to promote social inclusion while also meeting community health and wellbeing targets.

I invite your feedback on the contents of this plan - you can do this by submitting direct to Council or by attending on the of the five community meetings advertised on the previous page. The document will then be reviewed (taking into account public sentiment) and tabled for adoption at the Council meeting on 27 June 2023. From there, Council can commence implementing the goals and initiatives as a result of the adopted budget.

Mayor Paul Simmons

Ensuring
service
delivery is
maintained

Message from the CEO



This document is the first annual plan delivered by the incoming term of Council at the 2022 Local Government Elections, which strives towards 2025 and its overarching vision as outlined in the 2021 – 2025 Community Vision Plan.

A significant portion of this document includes budget allocations that invest in long-term priorities identified by the residents, community and industry groups of this district. However, given the current economic climate, Council has made a concentrated effort to deliver a budget that is financially responsible while ensuring there is no reduction to our service levels. Taking this approach will ensure Council remains prudent in its long term financial sustainability and promotes intergenerational equity.

Further, to ensure Council's priorities are delivered in the context of long term financial sustainability, all projects and initiatives are put through a thorough process to ensure alignment with asset management plans and great value for ratepayers. With this in mind, a significant focus of this budget is on the renewal of large asset categories including roads, footpaths, buildings and critical water infrastructure. These projects will have a long term impact on meeting maintenance and renewal requirements.

While these infrastructure projects are not new, it represents a level of commitment to investing in the Coorong's future. Long term benefits will be recognised for years to come. In addition, upgrades to community facilities such as the Tintinara Aerodrome and community toilets at Coonalpyn will facilitate economic prosperity.

In the current economic climate, Council is well positioned to navigate new challenges and adapt its change management practices as we go about our business as usual practices. This would not be possible without the support of Commonwealth and State funding partners and industry bodies on which your Council Members and staff are represented.

The draft Annual Business Plan & Budget is a collaborative effort of Council Members, staff and the community. My team and I look forward to achieving these objectives in a financially responsible manner and with the community's best interests at the forefront.

Bridget Mather



Keeping financial pressure on ratepayers to a minimum

Your Council

Your Council Members provide community leadership, guidance and facilitate communication between the community and Council. Council Members play an important policy making role, identify of holistic community needs, setting objectives to meet those needs and establish priorities between competing demands.



Mayor
Paul Simmons



Deputy Mayor
Cr. Jeff Arthur



Cr. Brenton Qualmann



Cr. Jonathan Pietzsch



Cr. Lisa Rowntree



Cr. Mick O'Hara



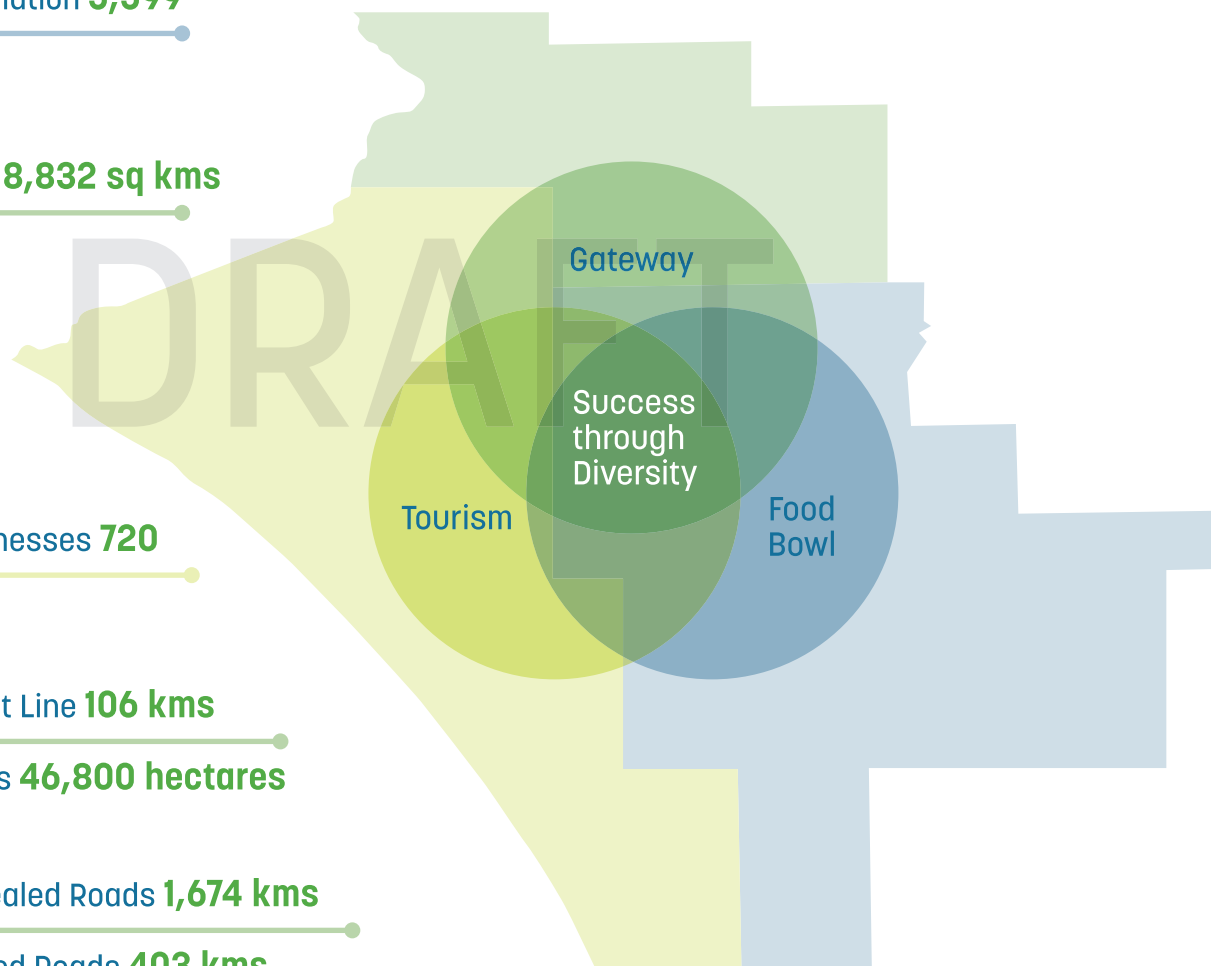
Cr. Ruth Maidment



Cr. Sharon Bland

Council Profile

Spread over 8,832 square kilometres, the district comprises three distinctively different zones: the tourism and grain gateway of Tailem Bend, wetlands and waterways of the lower lakes & Coorong and the food-bowl of the Upper South East. Each is connected to the other but is unique in its character, and together they combine to present opportunity for current and future generations.





Council Services

Governance & Financial Management



Development Assessment



Waste Management



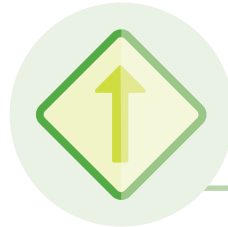
Playgrounds



Environmental Management



Caravan Park



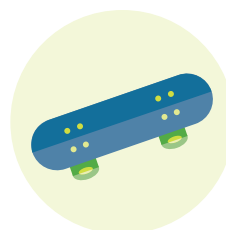
Roads & Infrastructure Management



Fire Preparedness



Swimming Pool



Skate Park

Strategic Planning Framework

Community Vision Plan 2021 – 2025

Sets our vision and direction

Strategic Plans

Positions Council for future decision making

Long Term Financial Plan, Coorong
Asset Management Strategy,
Growth Strategy

Annual Plans

*Designed to forecast resources for Council services
and monitor what we said we'd set out to achieve*

Annual Business Plan & Budget,
Annual Report

Outputs: Annual Reporting & Plan Monitoring

*Various channels utilised to report
our progress to stakeholders*

Committee Meetings, Quarterly Progress Reports,
'Coorong News' updates

DRAFT

Annual Planning Framework

Purpose

The Draft Annual Business Plan & Budget outlines our proposed program and budget for the coming financial year.

This document has been informed by public consultation processes on many of our adopted strategies and plans, and how these interweave into the annual budget setting cycle.

Strategy & Governance

With the abolishment of wards at the 2022 Local Government Elections, Council now drives a mantra of 'one district, diverse communities.' This plan strengthens a district wide approach to capital works and community investment while maintaining the strategic direction set out in Council's Community Vision Plan 2021 – 2025.

Strategic Budgets Approach

There is a strategic planning group that meets regularly to review projects based on alignment to strategic objectives, value for money and whether the cost can be complemented by external funding sources. Council Members prioritise the projects according to the alignment with strategic plans and principles, completing the process with their views on community perception and strategic vision.

Advocacy

As the political landscape settles after the elections held across all three tiers of government during 2022, Council has continued its advocacy through Commonwealth-local and State-local partnerships to identify and access funding and grants. This provided additional support for the delivery of critical infrastructure projects as identified in the Community Vision Plan 2021 – 2025.



Influencing Factors

National Environment

The global and national economic environment is currently impacted by significant inflationary pressures.

Inflation and interest rates increased substantially during 2022/23. This in turn increased prices and combined with supply chain disruption, continue to impact the delivery of Council services.

Council must continue to maintain a large sealed and unsealed road network. Costs in this environment are a significant component of the capital and operational budgets. To assist with having an effective and efficient approach to budgeting, an evidence-based approach to asset management combined with revised asset valuations and condition profiles is used. This has meant Council must invest significantly to address a backlog of asset renewals over the next 5 - 10 years.

Cost of living pressures having widespread effect are acknowledged and understood by Council in determining its budget for 2023/24.

Local Environment

Council continues to work closely with our neighbouring local government bodies in shaping future progression of the Murraylands and Riverland region and leveraging opportunities for collaboration and cost savings through greater economies of scale. Closer to home, this will involve actions aimed to stimulate growth as identified in the Growth Strategy (adopted December 2022). These will include undertaking preparation of an Investment Prospectus, a Structure Plan for Wellington East, establishing a Surplus Land Disposal Strategy and considering Council's role in addressing the shortage of Affordable Housing. We are also aware that the recent River Murray floods may impact availability of contractors who are assisting other councils, individuals and local businesses in their recovery from this event.



Social and Economic Fabric

As the nation rebounds from two years of COVID-19 restrictions in both social and commercial activities, Council is determined to play its part in strengthening community connections. Continued implementation of the 'Community Sustainability Program' (launched March 2023) will ensure sporting clubs, community groups and volunteer organisations have the chance to be supported, empowered and build a better future. In addition Council will continue delivering actions associated with the Reconciliation Action Plan and most importantly, maintaining a healthy and productive relationship with the Ngarrindjeri Aboriginal Corporation and the Raukkan community. Actions identified in the Disability Access and Inclusion Plan not only promote access and inclusion, but ensure all members of the community have the best opportunity to participate in community life.

Financial Sustainability

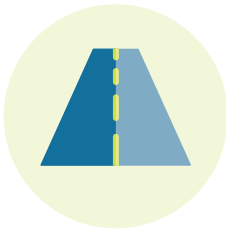
Council reviewed its Long Term Financial Plan (LTFP) in February 2022. The plan provides a detailed roadmap for long term sustainability through affordable spend on asset renewal and replacement, ensuring roads, buildings, footpaths and other assets are maintained in sound and appropriate condition, without imposing significant costs on future generations. The LTFP ensures Council takes a long-term perspective when setting budgets and considering major decisions such as capital projects and service levels. It also guides borrowing levels to ensure projects can be delivered efficiently and to provide an integrated perspective to large projects and how they can be funded. Council is also accountable to the Essential Services Commission of South Australia (with Council being a water and sewerage utility) to ensure services are competitive, fair and operate under a full cost recovery model. The Commission also ensures the alignment and impact of decisions taken through the annual business planning process are in the context of sound long-term financial planning.

Handy Definitions

Capital expenditure	(or 'Capex') Funds to acquire, upgrade and/or renew physical assets such as property, plants, buildings, technology or equipment.
Capital value	The value of land, buildings and other improvements.
Consumer Price Index (CPI)	An index of the variation in prices for goods and services and a measure of the change in price(s) over time.
Differential rate	Where Council imposes a different rate in the dollar for different categories of rateable land.
Financial year (FY)	The period from 1 July 2023 to 30 June 2024.
Fixed charge	A base amount payable to Council for the cost of administering Council activities and maintaining the services and infrastructure that supports each property.
Growth	Discretionary developments or improvements made to a property by a ratepayer (ie. building extension, new build).
Key financial indicators	<p>Operating surplus ratio Expression of operating result as a percentage of the total revenue (excluding Landscape Levy)</p> <p>Net financial liabilities ratio Expression of net financial liabilities at the end of the financial year as a percentage of operating income for the year.</p> <p>Asset renewal funding ratio Expression of new capital expenditure on the renewal or replacement of assets relative to the level proposed in Council's respective asset management plan.</p>
Landscape Levy	Formerly known as the 'NRM Levy', paid by all ratepayers and collected across all South Australian councils to help fund the district's two regional landscape boards (Murraylands & Riverland and Limestone Coast).
Operating expenditure	The costs related to the day-to-day running of Council.
Service charges	A fee or charge imposed by Council for access to various services or facilities, either as a part of its statutory functions or on a discretionary basis.
Total revenue	The amount generated from Council's various funding sources.

2023/24 Highlights

Council will deliver the following key budget items, as well as the day-to-day services, facilities and infrastructure for people who live, work and visit our district.



\$2.05m

Sealed roads



\$3.6m

Unsealed roads



\$700k

Buildings & Community Facilities



\$40k

Cyber security



\$20k

Environmentally sustainable initiatives



\$30k

Coorong Civic Centre – Disability Access Improvements



\$428k

Critical Water Infrastructure Renewal Program



\$125k

New Footpaths



\$425k

Tintinara Aerodrome Upgrade

DRAFT

2023/24

Budget at a Glance

	FY2023 Budget	FY2024 Budget	Year on Year Change (\$)
Operating Budget			
Operating Revenue	16,319	18,038	1,719
Operating Expenses	16,306	19,008	2,702
Surplus/Deficit	13	(969)	(982)
Amounts received for new or upgraded assets	1,411	2,050	639
Net surplus/deficit	1,424	1,081	(343)
Capital Budget			
Renewal/replacement	7,006	6,336	886
New/upgraded	2,772	1,843	713
Total Capital Expenditure	9,778	8,179	1,599



2023/24

External Funding

Funding Program	Description	External Funding Amount	Total Project Cost
Special Local Roads Program	Carcuma Road Upgrade	\$1,000,000	\$1,500,000
	Poltalloch Road Upgrade	\$467,000	\$1,050,000
Black Summer Bushfire Recovery Grants Program	Mobile Phone Towers – Colebatch and Narrung	\$1,471,550	\$1,471,550
Regional Airports Fund	Tintinara Aerodrome Upgrade	\$193,125	\$425,000
RAA	Meningie EV Charging Station	\$45,000	\$115,000
Landcare Australia*	Landcare Australia Carbon Project	\$50,000	\$50,000
Meat and Livestock Australia*	Upper South East Sandy Soils – Let's Make The Bucket Bigger	\$373,230	\$373,230
Australian Government*	Smart Farms Small Grants	\$210,384	\$210,384
BHP*	Aquatic reed planning project on Lakes Albert and Alexandrina	\$50,000	\$50,000

* externally funded environmental project managed by the Coorong Tatiara Local Action Plan

Community Vision Plan

The Basis of Council Decision Making



Economy



Infrastructure



Community



Environment



Leadership

DRAFT



Outcome 1

Economy



Capitalising on the district’s innovation, business and community confidence will build a positive future for exploring new economic opportunities.

DRAFT

Projects	Initiatives
<ul style="list-style-type: none"> Investment Prospectus – promoting opportunities for emerging industries and growth. 	<ul style="list-style-type: none"> Reinstate Land Use Policy to facilitate residential development adjacent Tintinara Airfield
<ul style="list-style-type: none"> Progress streetscape works across Tintinara, Coonalpyn and Taillem Bend 	<ul style="list-style-type: none"> Strategic land use planning, incorporating a surplus land review to support district growth
<ul style="list-style-type: none"> Wellington East Structure Plan 	



Outcome 2

Infrastructure



Continued capital investment in road infrastructure, recreational facilities and the tourism landscape will support delivery of essential services to the community.

Projects	Initiatives
<ul style="list-style-type: none"> Construction of car park for Electric Vehicle Charging Station, Meningie (in collaboration with RAA) 	<ul style="list-style-type: none"> Allocation of dedicated resource to proactively manage Council's Community Wastewater Management System
<ul style="list-style-type: none"> Renewal of Coonalpyn Toilets (to align with streetscape planning) 	<ul style="list-style-type: none"> Development and Adoption of Building & Community Facility Asset Management Plan
<ul style="list-style-type: none"> Stormwater and Drainage Revaluations 	<ul style="list-style-type: none"> Extensive capital works program (refer page 27)
<ul style="list-style-type: none"> Two significant road projects; Carcuma & Poltalloch Roads 	



Outcome 3

Community



Maintaining strong and active communities as the foundation for future growth and wellbeing.

DRAFT

Projects	Initiatives
/ Complete the Meningie to Seven Mile Road section of the Murray Coorong Trail	/ Community Grants – two funding rounds
/ Establishment of Arts Advisory Group in accordance with year 2 of Reconciliation Action Plan	/ Continuation of Community Resilience Program (launched early 2023)
/ Explore opportunities for inclusivity initiatives (ie. ‘Changing Places’ facility funding)	/ Initiate street party through liaison with The Bend Motorsport Park (when coincides with racing calendar)
/ Officially open the Raukkan Walking Trail	/ Support women & girls participation in sport
/ Progress the Coorong Visitor Experience Plan	



Outcome 4

Environment



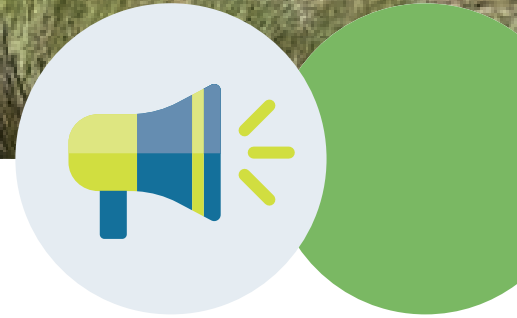
Considering the likely impacts of climate variability for our current and planned activities, whilst applying principles of sustainability and adoption in decision making.

Projects	Initiatives
<ul style="list-style-type: none"> / Future Proofing Drought Impacts 	<ul style="list-style-type: none"> / Conservation, education & tourism initiatives associated with Pangarinda Botanic Gardens
<ul style="list-style-type: none"> / Installation of Water Pump – Pangarinda Botanic Gardens 	<ul style="list-style-type: none"> / Environment & Sustainability Baseline Audit
<ul style="list-style-type: none"> / Pangarinda Botanic Gardens Walkways – path renewal 	<ul style="list-style-type: none"> / Invite a climate practitioner to address council on state-wide projects and directions from a carbon economy perspective
<ul style="list-style-type: none"> / Rural Reserves – Improvements 	<ul style="list-style-type: none"> / Lakes Albert & Alexandrina – Aquatic Reed Planting



Outcome 5

Leadership



Through collaborative leadership, council will take a unified approach to it’s community’s aspirations, interests and legislative requirements.

DRAFT

Projects	Initiatives
/ By-law Review	/ Affordable Housing – complete research and determine next steps
/ Coorong Civic Centre Entrance - Disability Access Upgrade	
/ Information and Communication Technology Strategy – Cyber Security	



Capital Expenditure and Strategic Projects

Capital Expenditure

Category	Capital Work Description	2023/24 Budget [\$,000]
Roads	Sealed Roads Renewal	2,050
	<i>Poltalloch Road Upgrade</i>	1,050
	<i>Reseal Program</i>	1,000
	Unsealed Roads Renewal	3,600
	<i>Carcuma Road Upgrade</i>	1,500
	<i>Resheet Program</i>	2,100
	Hutt Street Upgrade (Stage 1 of 3)	125
	Kerb & Gutter Renewal Program	50
	Footpath Renewal Program	50
	Footpath Extension Program	125
Meningie Car Park & EV Charging Station	116	
Plant & Equipment	Plant & Equipment Renewal	900
Community Facilities	Buildings & Structures Renewal Program	250
	Tintinara Aerodrome Upgrade	425
	Tailem Bend Civic Centre – Disability Access	30
Water	CWMS Renewal Program	338
	Stormwater Renewal Program	65
	Water Supply Renewal Program	25
Information Technology	Information and Communication Technology Strategy	30
Total		8,179

Strategic Projects Master Planning

Detail	Expenditure
Streetscaping Masterplan Masterplanning for Tailem Bend, Coonalpyn and Tintinara townships to suggest improvements and provide a holistic vision for public spaces.	100,000
Wellington East Potable Water Continue to work with SA Water to establish and regulate a potable water connection to the Wellington East township.	TBA
Growth Strategy Growth Strategy activities within Wellington East Structure Plan providing a blueprint for economic infrastructure delivery and land development as this town continues to experience healthy population growth.	50,000*

* deferred from 2022/23

Operational Expenditure

Significant Operational Activities

Detail	Expenditure
<p>Environment & Sustainability Baseline Audit</p> <p>Understand the environmental footprint generated from Council activities. The information will lead to developing an Environment & Sustainability Audit in 2024/25 to ensure Council meets its obligation as a good steward of the local environment, benefits from opportunities to reduce energy use and ensures Council activities make positive contributions to a sustainable future.</p>	<p>20,000</p>





Information and Communication Technology Strategy

A robust Information and Communication Technology (ICT) system is vital in Council's daily operations to ensure business efficiency, protection of data and increased engagement with stakeholders. The ability to work efficiently and effectively under such systems requires continual upgrade and informed decision making, particularly with a cyber security focus to safeguard Council's intellectual property and ratepayer data.

An allocation of \$100,000 is earmarked for the ICT Strategy for 2023/24. Significant improvements have been made in the last two years with introduction of a new corporate business system and server migration.

However, more investment is required to ensure the security of systems and improve reliability and efficiency of communication equipment (such as phone systems). In a rapidly changing world Council must continue to ensure ICT systems are fit for purpose, good value and secure from the threats of cyber-crime.

A gap analysis undertaken in early 2023 has identified several key areas for continued investment:

- / Auditing and consolidating Asset Management Plans for all corporate ICT assets.
- / Switching and hardware improvements to ensure all equipment meets required standards and remains in warranty.
- / Improved use of Microsoft Office 365 to share documents, create reports and reduce reliance on multiple software solutions.
- / Phone systems upgrade to improve Customer Service and reduce ongoing operating costs.

Highest priority actions will be funded in 2023/24 with the balance in 2024/25. The main focus for next financial year will be security and essential upgrade activity.



Service Delivery

Local government enables the economic, social and cultural development of the vast area that it represents. Its beneficiaries – residents, community members, business, industry and community groups – are supported by a range of Council services for the wellbeing of those within. The assets and infrastructure under Council’s care and control support the community while meeting economic and environmental requirements.

In 2023/24, Council will raise a net sum of \$9.87 million (net of rebates) in general rates. This equates to approximately 54% of Council’s operating revenue and proposes a 10% rate increase in line with Council’s Long Term Financial Plan.

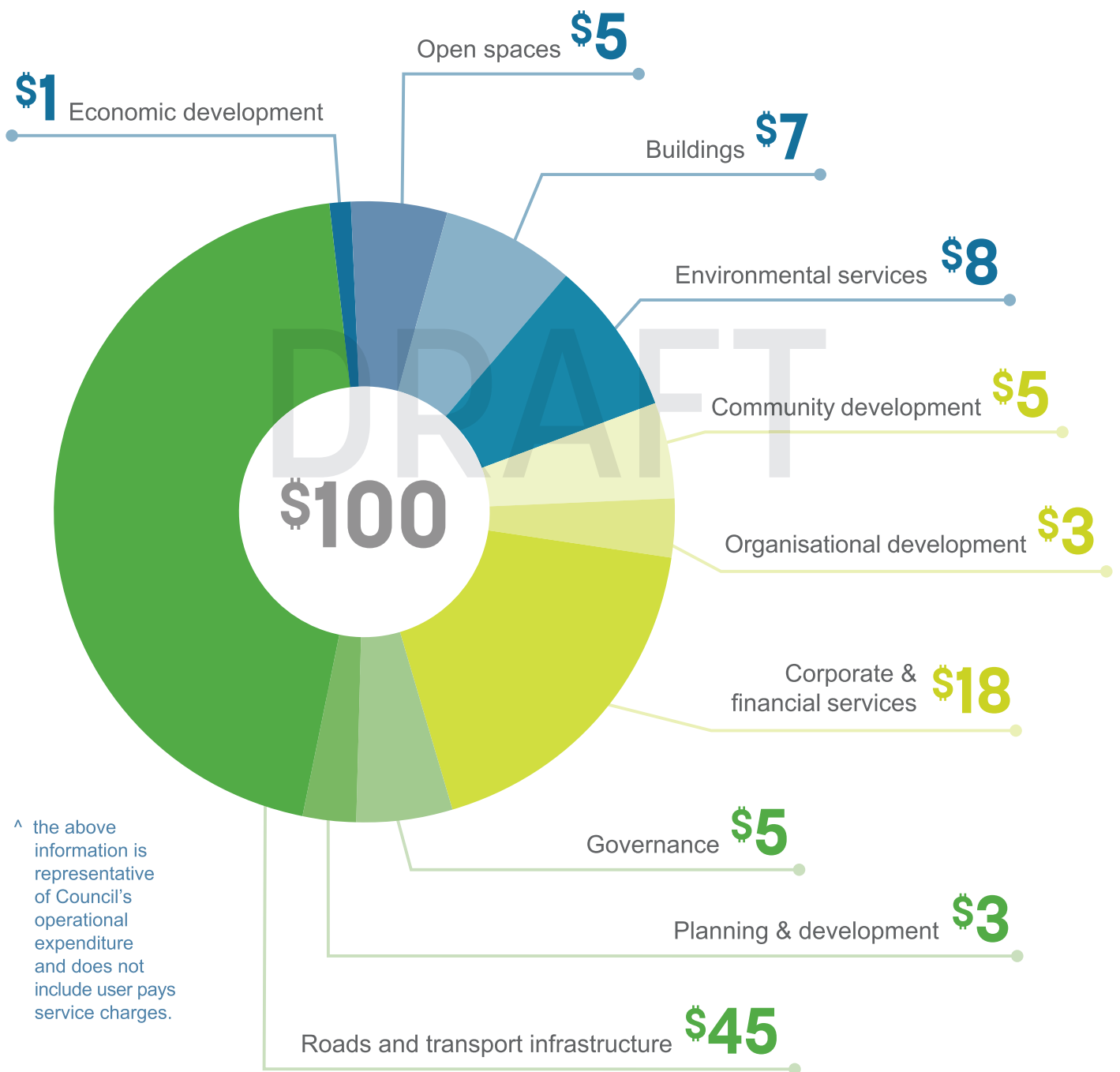




DRAFT

How your Rates are Spent

For every \$100[^] of general rates collected in 2023/24, Council will deliver the following services:



[^] the above information is representative of Council's operational expenditure and does not include user pays service charges.

Rating Methodology

Council’s proposed rate strategy and basis for 2023/24 is to apply differential rates. This is determined by predominate land use or zoning. The categorisation of land use is provided to Council by the Office of Valuer General (OVG) and is reviewed annually - citing the Valuation Land Act 1971.

Regulation 14 of the *Local Government (General) Regulations, 2013* provides that “for the purposes of section 156 of the Act, the following categories of land use are declared as permissible differentiating factors.”

- a. Residential
- b. Commercial – Shop
- c. Commercial – Office
- d. Commercial – Other
- e. Industry – Light
- f. Industry – Other
- g. Primary Production
- h. Vacant Land
- i. Other
- j. Bulk Handling Zone

	Rate
Residential	0.00320
Commercial – Shop	0.00384
Commercial – Office	0.00384
Commercial – Other	0.00384
Industry – Light	0.00384
Industry – Other	0.00384
Primary Production	0.00240
Vacant Land	0.00528
Other	0.00384
Bulk Handling Zone	0.00913

Fixed Charge

Council has determined that a component of the total rate will include a base level contribution, which recognises Council’s ability to deliver a vast range of services to the community. Council must maintain a level of internal support, infrastructure and administrative services, and it recognises that no particular group of ratepayers benefit more than any other group of ratepayers by the provision of such services. Further, Council considers it fair that all ratepayers contribute equally to the cost of administering Council’s service base.

The final phase of a reduced fixed charge (now \$150) was implemented in 2022/23 as a form of financial relief to ratepayers. This will be maintained in 2023/24.

Valuation

Council has adopted the use of capital value as the basis for valuing land within the Council area. This method values the land and all of the improvements on same, and is considered the fairest and most efficient method of distributing the rate responsibility across all ratepayers according to their capacity to pay as measured by property wealth.

The Valuer-General has provided Council with proposed valuations (subject to change prior to 30 June 2023) of rateable properties, totaling \$3,511,086,460 (including \$40,756,769 for non-rateable property valuations) as at 11 April 2023.

Proposed Rate Instalment Due Dates

Rates will be payable in approximately four equal instalments.

- / Monday 4 September 2023
- / Monday 4 December 2023
- / Monday 4 March 2024
- / Monday 3 June 2024

Service Charges



Community Wastewater Management Scheme (CWMS)

The CWMS at Meningie, Tailem Bend, Tintinara and Wellington East are designed to collect, treat, re-use and/or dispose of primary treated effluent from septic tanks on individual properties. The occupied property unit includes an amount for future septic tank desludging (every four years). Council recovers the cost of operating the schemes, with table 1 displaying charges for 2023/24:

Table 1	No. connections	Charge	Planned Income
Occupied	1,601	\$700	\$1,120,700
Vacant	245	\$670	\$164,150
Total			\$1,284,850

Kerbside Waste Collection

Council provides a kerbside waste management collection service within the defined areas of the district. The service charge is levied in accordance with legislation to recover the cost of providing this service, to which a \$337 annual charge applies.

Positive embedment of the new region-wide waste collection contract will see development of a business case to implement a bin replacement program and future consideration for a Food Organics Garden Organics (FOGO) collection service.

Regional Landscape Levy

Council will apply the levy pursuant to the *Local Government Act 1999* and in doing so, will act as a collection agent for the two Landscape Boards within our district – Limestone Coast and Murraylands & Riverland.

The 2023/24 Limestone Coast Landscape Board levy is as follows:

Table 2	Indicative levy per rateable property	No. rateable properties	Indicative levy per land use category
Residential, Vacant and Other	\$104.00	321	\$33,396
Commercial	\$140.00	46	\$6,440
Industrial	\$228.00	9	\$2,052
Primary Production	\$407.00	382	\$155,474
Total			\$197,362

The Murraylands & Riverland Landscape Board will collect \$284,553. It is important to note that Council does not retain this revenue, nor determine how the revenue is spent.

Non-Potable & Non-Drinking Water

On each eligible assessment of rateable and non-rateable land in Peake and Wellington East, the following charges will apply for delivery of a non-potable & non-drinking water service:

	Charge
Supply charge	\$235 per annum
Usage charge	\$0.60 per kilolitre

Council will apply the landscape levy pursuant to the *Local Government Act 1999*

Rates Assistance

Rate Rebates

A discretionary rebate of rates in respect of any rateable land in the Council area is available in accordance with the *Local Government Act 1999* and Council's Rating Policy. The policy provides eligibility and guidance which a ratepayer is entitled to a discretionary rebate. Please visit our website or contact the Finance Officer – Rates on 1300 785 277 for further information. Applications close 31 March 2024.

Hardship Provisions

Ratepayers who suffer difficulties in meeting their obligation to pay the instalment of rates when they fall due are strongly encouraged to contact the Finance Officer – Rates to discuss the hardship they are experiencing and to discuss payment options available. Please phone 1300 785 277 for a confidential discussion.

Rate Capping

Rate capping provides relief for what would otherwise amount to a substantial change in rates payable to a ratepayer due to rapid changes in valuation. For 2023/24, Council will provide a 15% rate cap for all rating categories on application.

Postponement of Rates for Seniors

Eligible Seniors Card holders can apply to Council for the postponement of rates on their principal place of residence. To apply for postponement of rates please contact the Finance Officer – Rates on 1300 785 277 to discuss eligibility and specific criteria required for application.





Rating Strategy

Expected Rates Revenue (as at 30 May 2023)

General Rates Revenue	2022/23 (as adopted)	2023/24 (projected)	Notes	Comments
Rates (existing properties)	8,015,898	9,871,098*	(a)	* inclusive of fixed charge
Fixed Charge	676,050			2023/24 Fixed Charge component absorbed in figure (a)
General Rates	8,691,948	9,871,098	(b)	13.5% change (includes factor for growth)

Other Rates (inc. service charges)	2022/23 (as adopted)	2023/24 (projected)	Notes	Comments
Regional Landscape Levy	435,128	481,915	(c)	Figure not set or retained by Council (State tax), this represents a 11.5% increase
Waste Collection	725,719	733,649	(d)	0.9% increase relates to growth in number of properties (not increased fees)
Non-Potable Water Supply	58,985	58,985	(e)	No change
Community Wastewater Management Scheme	1,175,142	1,284,850	(f)	Statutory cost recovery
<i>Total Service Charges</i>	<i>2,394,974</i>	<i>2,559,399</i>	<i>(g)</i>	
Total General Rates and Service Changes	11,086,922[^]	12,430,497[^]	(h)	[^] The amounts are exclusive of concessions, rebates, interest and fines. As such, this will not equate to the total rates amounts shown in the Statement of Comprehensive Income on page 43

(h)=(b)+(g)



Notes

- (a) **General rates (existing properties)**
in 2023/24 this will reflect the revenue from properties that existed in 2022/23. Figures from 2022/23 have been reproduced so that a year-by-year comparison can be undertaken.
- (c) **Regional Landscape Levy**
Councils are required under the *Landscape South Australia Act 2019* to collect the levy on all rateable properties on behalf of the State Government. The figure stated here represents fixed charge (Limestone Coast) and variable (Murraylands & Riverland).

actions
aimed to
stimulate
growth



Estimated Growth in number of Rateable Properties (as at 30 May 2023)

	2022/23 (as adopted)	2023/24 (projected)	Notes	Change
Number of rateable properties	4,618	4,642	(m)	0.51%

Notes

- (m) **Growth** - as defined in the *Local Government (Financial Management) Regulations 2011* regulation 6(2). Growth is defined as where new properties have been created which has added rateable properties to Council's ratepayer base. Growth can also increase the need and expenditure related to infrastructure, services and programs which support these properties and residents.

DRAFT

Estimated Average General Rates per Rateable Property (as at 30 May 2023)

	2022/23 (as adopted)	2023/24 (projected)	Notes
Average per rateable property	\$1,882.19	\$2,126.48	(n)

Notes

- (n) **Average** - this is based on the total of all rateable properties and is therefore not necessarily indicative of either the rate or change in rates that individual ratepayers will experience.

Expected Differential Rates Revenue (as at 30 May 2023)

Land Use (GROSS)	Total expected revenue		No. of rateable properties		Average per rateable property		Cents in the \$	
	2022/23*	2023/24	2022/23	2023/24	2022/23**	2023/24**	Change (\$)	2023/24
Residential	1,647,592	2,257,959	2,155	2,159	914.54	1,045.84	131.29	Refer page 33
Commercial – Shop	27,727	38,453	52	53	683.20	725.54	42.33	
Commercial – Office	3,592	4,305	5	5	868.43	861.06	-7.37	
Commercial – Other	305,952	361,435	133	146	2,450.39	2,475.58	25.19	
Industry – Light	6,573	9,647	14	14	619.52	689.08	69.56	
Industry – Other	12,372	16,264	19	19	801.15	856.03	54.88	
Primary Production	5,655,905	6,597,140	1,498	1,505	3,925.64	4,383.48	457.84	
Vacant Land	222,998	403,345	608	609	516.77	662.31	145.53	
Other	45,838	85,790	126	124	513.79	691.86	178.06	
Bulk Handling Zone	87,349	96,756	8	8	11,068.66	12,094.62	1,025.96	

* exclusive of fixed charge component

** inclusive of fixed charge component

Notes

Council continues to use the Capital Value as the basis for valuing land within the Council area. The anticipated commencement of a Local Government Reform on 31 August 2023 removes the ability for a council to rate on site value, hence a capital value basis must be on which all properties are rated on.

- / The equity principle of taxation requires that taxpayers of greater wealth pay more tax than those of lesser wealth.
- / Property value is a relatively good indicator of wealth and capital value, which closely approximates the market value of a property and provides the best indicator of overall property value.

Fixed Charge

	Charge		
	2022/23	2023/24	Change (\$)
Fixed Charge	\$150	\$150	0

Appendix 1

Financial Statements

DRAFT

Statement of Comprehensive Income	2022/23 Budget [\$,000]	2023/24 Budget [\$,000]
Income		
Rates	11,002*	12,322*
Statutory Charges	271	186
User Charges	132	113
Grants, Subsidies & Contributions	4,629	5,024
Investment Income	32	77
Reimbursements	115	101
Other Income	138	215
Total Income	16,319	18,038

* inclusive of fixed & service charges, fines & interest, concession and rebates

Expenses

Employee Costs	5,279	6,334 [#]
Materials, Contracts & Other Expenses	6,895	7,584
Depreciation	4,841	5,182
Finance Charges	130	104
Internal Charges	(838)	(197)
Total Operating Expenses	16,306	19,008
Total Operating Surplus/(Deficit)	13	(969)
Amounts Specifically Received for New/Upgraded Assets	1,411	2,050
Net Surplus/(Deficit)[^]	1,423	1,081

[#] includes provision of two new positions, superannuation guarantee increase (0.5%) and identification of all employee costs

[^] transferred to Equity Statement

collaboration
and cost savings
through greater
economies
of scale

Statement of Financial Position	2022/23 Budget (\$,000)	2023/24 Budget (\$,000)
Assets		
Current Assets		
Cash & Cash Equivalents	576	1,069
Trade & Other Receivables	895	1,299
Inventories	427	382
Total Current Assets	1,898	2,751
Non-Current Assets		
Financial Assets	87	18
Infrastructure, Property, Plant & Equipment	263,441	157,901
Total Non-Current Assets	263,528	157,919
Total Assets	265,426	160,670
Liabilities		
Current Liabilities		
Trade & Other Payables	3,073	882
Borrowings	352	0
Short Term Provisions	1,061	858
Total Current Liabilities	4,486	1,740
Non-Current Liabilities		
Borrowings	2,525	2,339
Provisions	323	286
Total Non-Current Liabilities	2,848	2,625
Total Liabilities	7,334	4,365
Net Assets	258,093	156,305
Equity		
Accumulated Surplus	36,899	35,358
Asset Revaluation Reserve	218,202	119,340
Other Reserves	2,992	1,607
Total Equity	258,093	156,305

Statement of Cash Flow	2022/23 Budget [\$,000]	2023/24 Budget [\$,000]
Cash Flows from Operating Activities		
Receipts		
Operating Receipts	16,287	17,961
Investment Receipts	32	77
Total Operating Receipts	16,319	18,038
Payments		
Payments to Suppliers and Employees	(11,336)	(13,722)
Finance Payments	(129)	(104)
Total Operating Payments	(11,465)	(13,826)
Net Cash provided by (or used in) Operating Activities	4,854	4,213
Cash Flows from Investing Activities		
Receipts		
Grants Specifically for New or Upgraded Assets	1,411	2,050
Sale of Replaced Assets	375	180
Repayment of Loans from Community Groups	0	15
Total Capital Receipts	1,786	2,245
Payments		
Capital Expenditure on Renewal/Replaced Assets	(7,006)	(6,336)
Capital Expenditure on New Assets	(2,772)	(1,843)
Total Capital Expenditure Payments	(9,778)	(8,179)
Net cash provided by (used in) Investing Activities	(7,992)	(5,934)
Repayment of Loan Principal	(303)	(316)
Add Borrowings (New Loans)	0	750
Net Increase/(Decrease) in Cash	(303)	433
Cash and Cash Equivalents at start of reporting period	4,018	2,357
Cash & Cash Equivalents at the end of the reporting period	576	1,069

Uniform Presentation of Finance	2022/23 Budget [\$,000]	2023/24 Budget [\$,000]
Income	16,318	18,038
Expenses	(16,306)	(19,008)
Operating Surplus/(Deficit)	13	(969)

Net Outlays on Existing Assets

Capital Expenditure on Renewal and Replacement of Existing Assets	(7,006)	(6,336)
Add back Depreciation Expense	4,841	5,182
Proceeds from Sale of Replaced Assets	375	180
	(1,481)	(758)

Net Outlays on New and Upgraded Assets

Capital Expenditure on New and Upgraded Assets	(2,772)	(1,843)
Amounts received specifically for new or upgraded Assets	1,410	2,050
	(1,670)	(9)
Net Lending/(Borrowing) For Financial Year	(3,138)	(1,737)

Operating Surplus Ratio	2022/23	2023/24
	0.1%	(5.4%)

Net Financial Liabilities Ratio	2022/23	2023/24
	35.4%	11.0%

Asset Renewal Funding Ratio	2022/23	2023/24
	125%	122%





Coorong District Council

95 - 101 Railway Terrace (PO Box 399)
Taillem Bend SA 5260

T 1300 785 277

E council@coorong.sa.gov.au
www.coorong.sa.gov.au

